

IC Recorder Operating Instructions



ICD-PX470

Refer to the Help Guide

This is the Operating Instructions, which provides you with instructions on the basic operations of the IC recorder. The Help Guide is an online manual. Refer to the Help Guide when you would like to know further details, operations and possible solutions when a problem occurs.

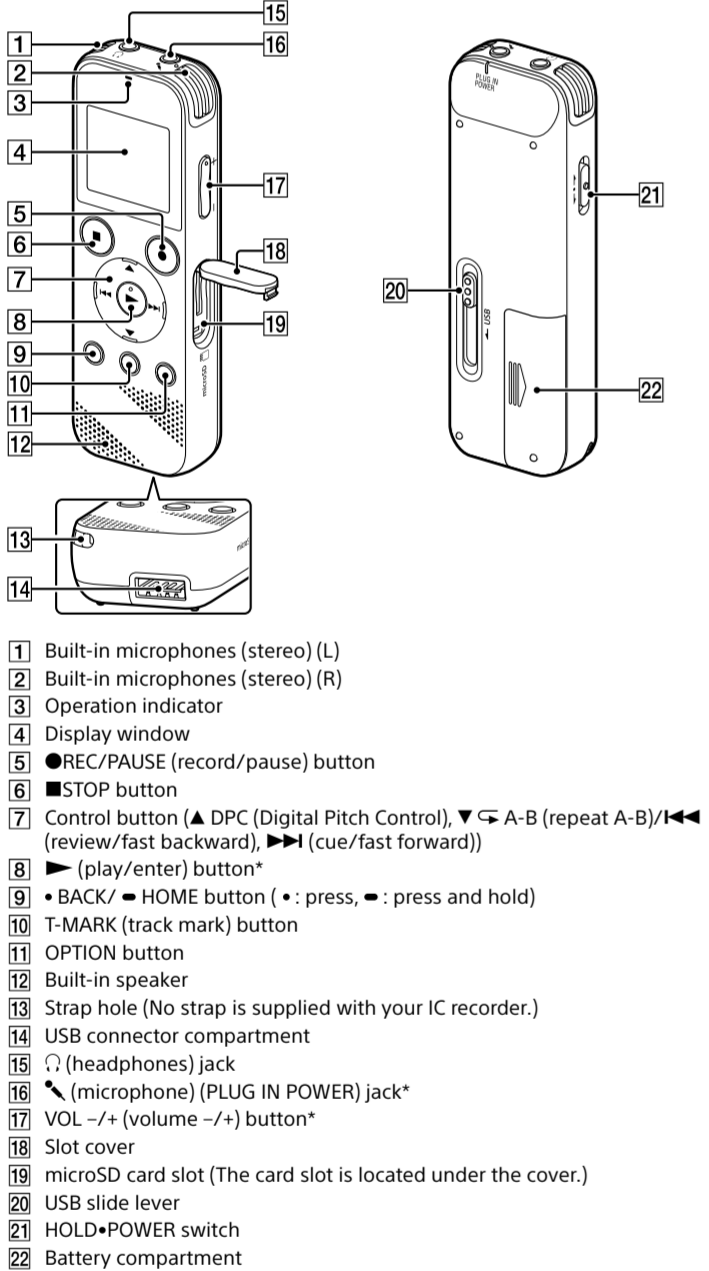
http://rd1.sony.net/help/icd/p47/h_cn/



Check the supplied items

- IC Recorder (1)
• LR03 (size AAA) alkaline batteries (2)
• Operating Instructions (this sheet)
• Warranty card

Parts and controls

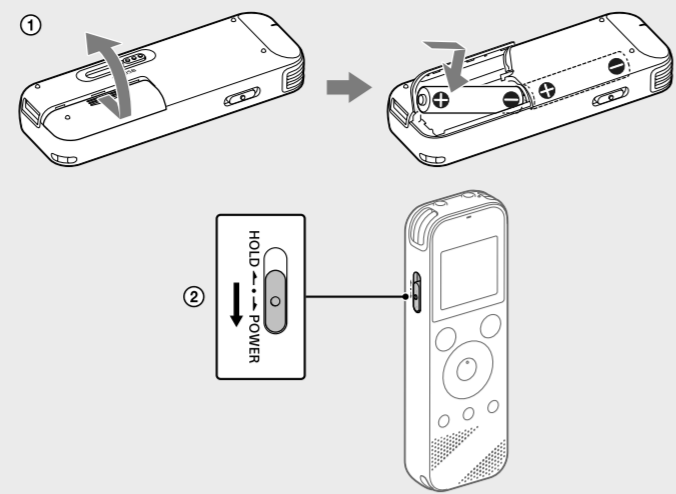


- 1 Built-in microphones (stereo) (L)
2 Built-in microphones (stereo) (R)
3 Operation indicator
4 Display window
5 REC/PAUSE (record/pause) button
6 STOP button
7 Control button (DPC (Digital Pitch Control), A-B (repeat A-B)/cue (review/fast backward), cue (cue/fast forward))
8 play/enter button*
9 BACK/ HOME button (* : press, : press and hold)
10 T-MARK (track mark) button
11 OPTION button
12 Built-in speaker
13 Strap hole (No strap is supplied with your IC recorder.)
14 USB connector compartment
15 headphones jack
16 microphone (PLUG IN POWER) jack*
17 VOL +/- (volume +/-) button*
18 Slot cover
19 microSD card slot (The card slot is located under the cover.)
20 USB slide lever
21 HOLD+POWER switch
22 Battery compartment

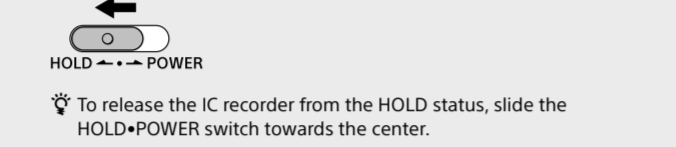
* The play/enter button, VOL +/- (volume +/-) button, and microphone (PLUG IN POWER) jack have a tactile dot. Use the tactile dot as a reference when operating the IC recorder.

Let's try out your new IC recorder

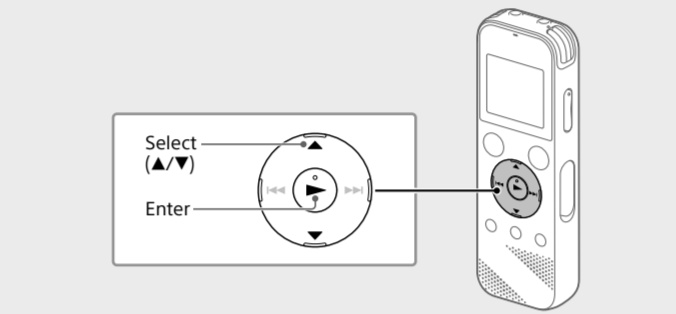
Power on



- 1 Slide and lift the battery compartment lid, insert LR03 (size AAA) alkaline batteries with the correct polarity, and close the lid.
2 Turn the power on.
To turn the power on Slide and hold the HOLD+POWER switch in the direction of "POWER" until the window display appears. To turn the power off, slide the HOLD+POWER switch to "POWER" and hold it until "关机" appears on the display window.
To prevent unintentional operations (HOLD) Slide the HOLD+POWER switch in the direction of "HOLD."



Initial settings

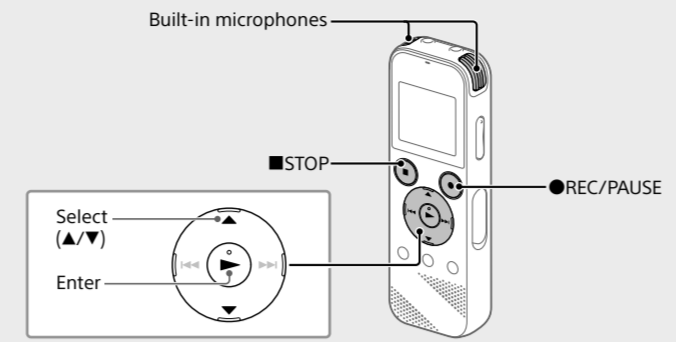


When you turn on your IC recorder for the first time, the "配置初始设置" screen appears on the display window. You can then select the display language, set the clock, and turn on/off the beep sound.

- 1 Select "是" to start the initial settings.
2 Select the display language.
3 Set the current year, month, day, hour, and minute.
4 Select "下一步."
5 Select "开" or "关" to turn on or off the beep sound.

- 6 Press VOL +/- to adjust the volume.
7 The built-in speaker is provided mainly for checking recorded audio files.
8 You can change any of the initial settings at any time later. For detailed instructions, refer to the Help Guide.
9 When you re-insert batteries, or when you replace batteries with new ones, the clock setting display appears, and the approximate date and time when you last operated the IC recorder before removing the batteries is displayed. Set the clock to the current time again.
10 To check the current time after the initial settings, slide the HOLD+POWER switch in the direction of "HOLD."

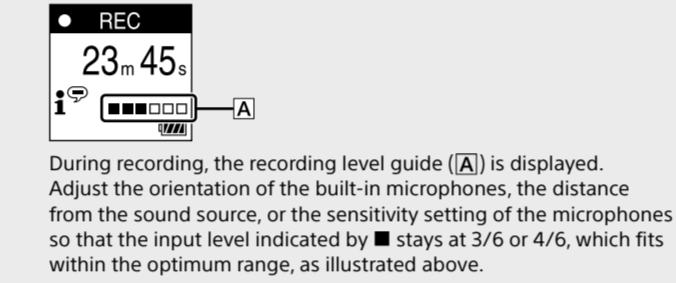
Record



- 1 Before you start using the IC recorder, make sure that the HOLD+POWER switch is at the center dot position.
2 You can select a recording scene for each situation by selecting "场景选择" in the OPTION menu.

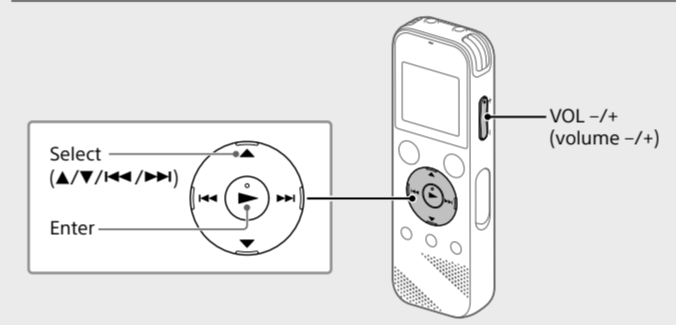
Recorded audio files are stored in "FOLDER01" under "录音文件" by default.

- 1 Select "录音" from the HOME menu.
2 Select the folder you want to store the recorded files.
3 Turn the IC recorder so that its built-in microphones point in the direction of the recording source.
4 Press REC/PAUSE.
5 Press STOP to stop recording.



- 6 Press STOP to stop recording.
7 After you stopped recording, you can press play to play the file you have just recorded.

Listen

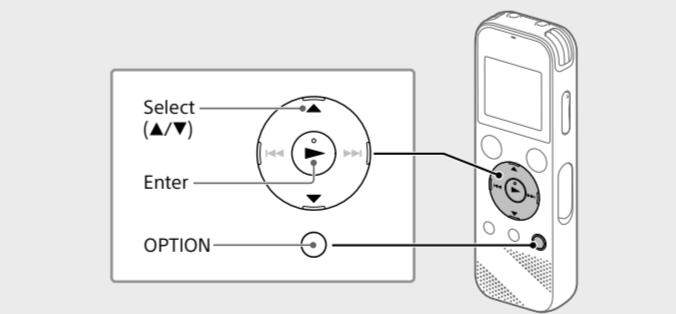


Recorded audio files are stored in "FOLDER01" under "录音文件" by default.

- 1 Select "录音文件" from the HOME menu.
2 Select "文件夹" - "内置内存" - "FOLDER01," and then press play.
3 Select your desired file.
4 Press STOP to stop playback.

- 5 Press VOL +/- to adjust the volume.
6 The built-in speaker is provided mainly for checking recorded audio files.
7 If you find the volume not loud enough or have difficulty in understanding what you hear, use headphones (not supplied).
8 When you select "录音文件," the file search categories of the stored files appear on the display window. You can select one of the search categories from "最新录音," "按录音日期搜索," "按录音场景搜索," or "文件夹."
9 To add a track mark You can add a track mark at a point at which you want to divide a file later or locate during playback. You can add a maximum of 98 track marks to each file. You can also add track marks during a recording.

Delete

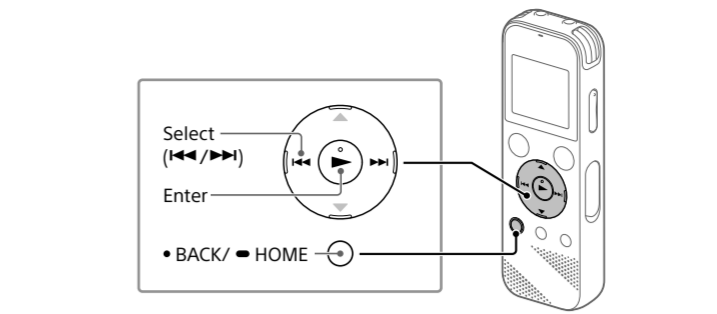


Note Once a file is deleted, you cannot restore it.

- 1 Select the file you want to delete from the list of recorded files or play back the file you want to delete.
2 Select "删除文件" from the OPTION menu.
3 Select "是."

Using the HOME menu

You can use the HOME menu for a variety of operations, including locating and playing a recorded file and changing the settings of your IC recorder.



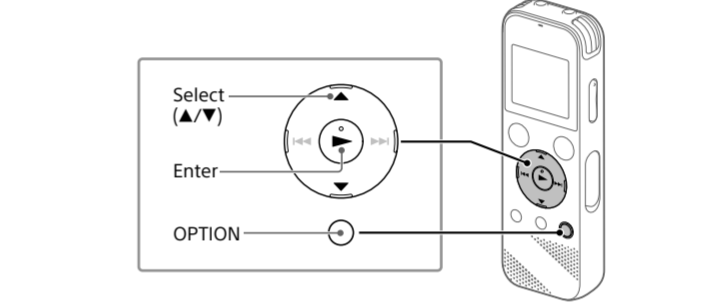
- 1 Press and hold BACK/HOME. The HOME menu screen appears.

Table listing HOME menu items: 音乐 (Music), 录音文件 (Recording files), 录音 (Recording), 设置 (Settings), 返回 XX* (Return XX*). Includes descriptions for each function.

Press STOP to return to the screen displayed before you entered the HOME menu.

Using the OPTION menu

You can use the OPTION menu to perform a variety of functions, including changing the settings of your IC recorder. The available items differ depending on the situation.

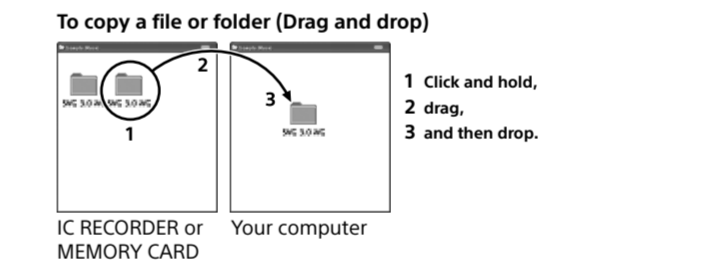


- 1 Select your desired function from the HOME menu, and then press OPTION.
2 Select the menu item for which you want to change the setting.
3 Select your desired setting option.

Copying files from your IC recorder to a computer

You can copy the files and folders from your IC recorder to a computer to store them.

- 1 Slide the USB slide lever in the direction of the arrow, and insert the USB connector into the USB port of a running computer.
2 Drag and drop the files or folders you want to copy from "IC RECORDER" or "MEMORY CARD" to the local disk on the computer.



- 3 Make sure that "正在访问" is not displayed on the display window of your IC recorder, and then disconnect the IC recorder from the computer.

Installing Sound Organizer 2

Install Sound Organizer on your computer. Sound Organizer allows you to exchange files between your IC recorder and your computer. Songs imported from music CDs and other media, MP3 and other audio files imported to a computer can also be played and transferred to the IC recorder.

- 1 Sound Organizer is compatible with Windows computers only. It is not compatible with Mac.
2 This IC recorder is compatible with Sound Organizer 2 only.
3 When installing Sound Organizer, log in to an account with administrator privileges.

- 4 Access the following Sony Service web site from your computer: http://service.sony.com.cn/
5 On the above web site, enter "Sound Organizer 2" in the search box to locate the Sound Organizer download page.
6 Follow the procedures instructed on the download page to download and then install the Sound Organizer.

Precautions

On power DC 3.0 V: Use two LR03 (size AAA) alkaline batteries DC 2.4 V: Use two NH-AAA rechargeable batteries DC 5.0 V: Rated current consumption 500 mA (powered by USB)

- On safety Do not operate the unit while driving, cycling or operating any motorized vehicle.
On handling Do not leave the unit in a location near heat sources, or in a place subject to direct sunlight, excessive dust or mechanical shock.
Be careful not to allow water to splash on the unit. The unit is not waterproof. In particular, be careful in the following situations:
When you have the unit in your pocket and go to the bathroom, etc.
When you bend down, the unit may drop into the water and may get wet.
When you use the unit in an environment where the unit is exposed to rain, snow, or humidity.
In circumstances where you get sweaty. If you touch the unit with wet hands or if you put the unit in the pocket of sweaty clothes, the unit may get wet.
Listening with this unit at high volume may affect your hearing. For traffic safety, do not use this unit while driving or cycling.

You may feel pain in your ears if you use the headphones when the ambient air is very dry. This is not because of a malfunction of the headphones, but because of static electricity accumulated in your body. You can reduce static electricity by wearing non-synthetic clothes that prevent the emergence of static electricity.

On noise Noise may be heard when the unit is placed near an AC power source, a fluorescent lamp or a mobile phone during recording or playback. Noise may be recorded when an object, such as your finger, etc., rubs or scratches the unit during recording.

On maintenance To clean the exterior, use a soft cloth slightly moistened in water. Then use a soft dry cloth to wipe the exterior. Do not use alcohol, benzene or thinner. If you have any questions or problems concerning your unit, please consult your nearest Sony dealer.

WARNING

Do not expose the batteries (battery pack or batteries installed) to excessive heat such as sunshine, fire or the like for a long time.

CAUTION

Risk of explosion if battery is replaced by an incorrect type. Dispose of used batteries according to the instructions.

Specifications

Capacity (User available capacity)*1: 4 GB (approx. 3.20 GB = 3,435,973,837 Byte)
Maximum recording time (Built-in memory): Table with columns for recording mode (LPCM 44.1 kHz/16 bit, MP3 192 kbps, MP3 128 kbps, MP3 48 kbps) and recording time (5 hours 20 minutes, 39 hours 45 minutes, 59 hours 35 minutes, 159 hours).

Note When you are going to record continuously for a long time, you may have to replace the batteries with new ones in the middle of recording. For details on the battery life, see Battery Life. The maximum recording time in this topic is for your reference only.

Battery Life: Table with columns for REC Mode, Recording, Playback with the built-in speaker, and Playback with the headphones. Includes notes on using Sony LR03 (5G) (size AAA) alkaline batteries (JEITA)*4,5.

When using NH-AAA rechargeable batteries (JEITA)*4,5: Table with columns for REC Mode, Recording, Playback with the built-in speaker, and Playback with the headphones.

Dimensions (w/h/d) (not incl. projecting parts and controls) (JEITA)*4: Approx. 38.3 mm x 114.1 mm x 19.3 mm

Mass (JEITA)*4: Approx. 74 g (including two LR03 (size AAA) alkaline batteries)
Temperature/Humidity: Table with columns for Operating temperature (5°C - 35°C), Operating humidity (25% - 75%), Storage temperature (-10°C - +45°C), and Storage humidity (25% - 75%).

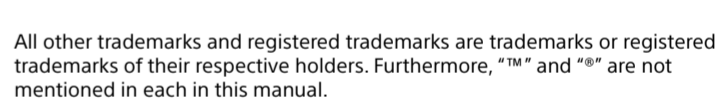
Compatible memory cards: microSDHC cards from 4 GB to 32 GB

Note microSDXC cards are not compatible with your IC recorder.

*1 A small amount of the internal memory is used for file management and therefore not available for user storage.
*2 When the built-in memory is formatted with the IC recorder.
*3 Default settings for the recording scenes.
*4 Measured value by the standard of JEITA (Japan Electronics and Information Technology Industries Association).
*5 The battery life may shorten depending on how you operate the IC recorder.
*6 When playing back music with the built-in speaker with the volume level set to 27.

Trademarks

- Microsoft, Windows, Windows Vista and Windows Media are registered trademarks or trademarks of Microsoft Corporation in the United States and/or other countries.
• Mac OS is a trademark of Apple Inc., registered in the USA and other countries.
• MPEG Layer-3 audio coding technology and patents licensed from Fraunhofer IIS and Thomson.
• microSD, microSDHC and microSDXC logos are trademarks of SD-3C, LLC.



All other trademarks and registered trademarks are trademarks or registered trademarks of their respective holders. Furthermore, "TM" and "®" are not mentioned in each in this manual.

This product is protected by certain intellectual property rights of Microsoft Corporation. Use or distribution of such technology outside of this product is prohibited without a license from Microsoft or an authorized Microsoft subsidiary.

The "Sound Organizer 2" uses software modules as shown below: Windows Media Format Runtime

License

Notes on the License This IC recorder comes with software that are used based on licensing agreements with the owners of that software. Based on requests by the owners of copyright of these software applications, we have an obligation to inform you of the following. Please read the following sections.

Licenses (in English) are recorded in the internal memory of your IC recorder. Establish a Mass Storage connection between the IC recorder and a computer to read licenses in the "LICENSE" folder.
On GNU GPL/LGPL applied software The software that is eligible for the following GNU General Public License (hereinafter referred to as "GPL") or GNU Lesser General Public License (hereinafter referred to as "LGPL") are included in the IC recorder. This informs you that you have a right to have access to, modify, and redistribute source code for these software programs under the conditions of the supplied GPL/LGPL. Source code is provided on the web. Use the following URL to download it. http://www.sony.net/Products/Linux/ We would prefer you do not contact us about the contents of source code. Licenses (in English) are recorded in the internal memory of your IC recorder. Establish a Mass Storage connection between the IC recorder and a computer to read licenses in the "LICENSE" folder.